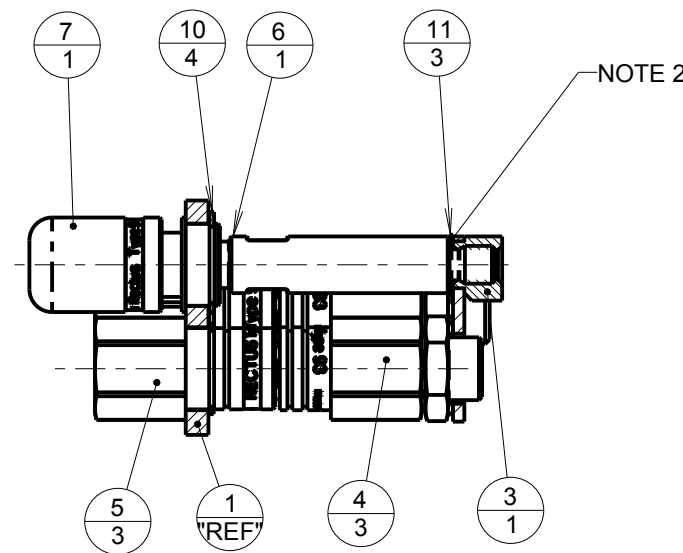
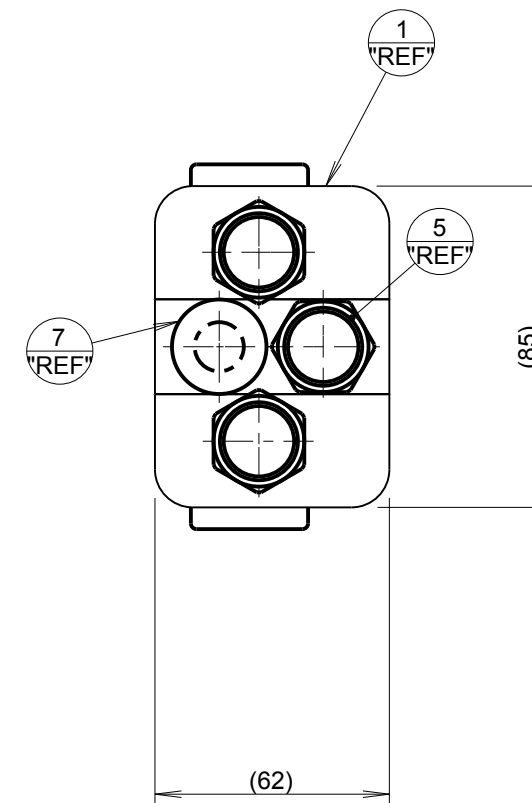
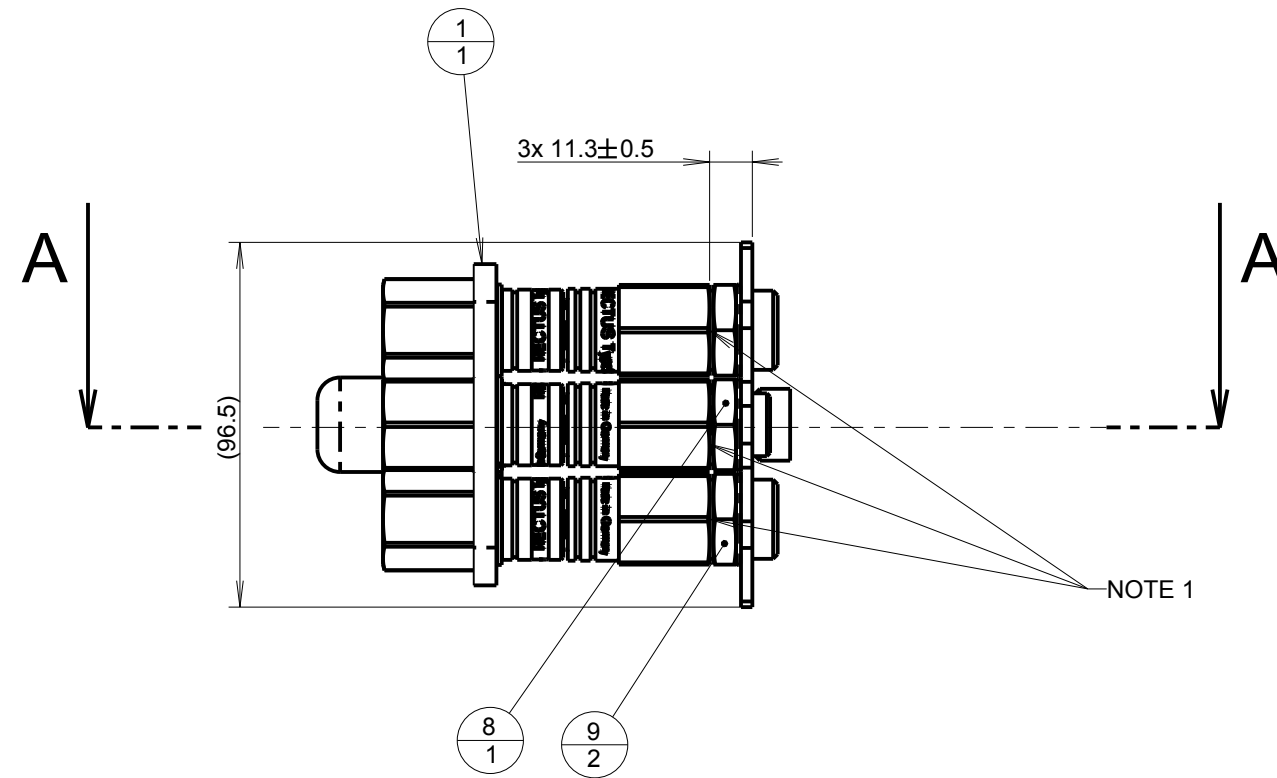


NOTE 1
SCALE 1:1



XSEC A-A

2. NUMBER OF SPACING SHIMS "10" IS GIVEN BY RELATIVE POSITION OF COMPONENTS "5" & "6" AND PROPER WORK OF ALL COUPLINGS
1. SURFACES "A" HAVE TO BE ALIGN ON ALL THREE COUPLINGS "93SLIW21SVN" IN ORDER TO WORK PROPERLY PLEASE SEE VIEW "NOTE 1"

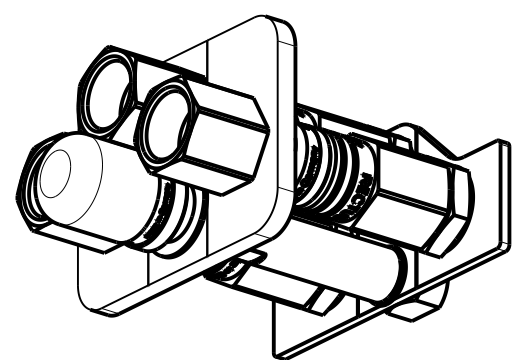
10	ST_SHIM_0_3_MM_10X16	3
9	RETAINING RING - EXTERNAL 21	4
8	MALE x MALE NIPPLE_B	2
7	MALE x MALE NIPPLE_A	1
6	LOCKING COUPLING	1
5	LOCKING BOLT	1
4	COUPLING_2	3
3	COUPLING_1	3
2	CONSOLE - WELDMENT	1
1	CONSOLE	4

POL.	NAZOV KOMPONENTU	OZNACENIE KOMPONENTU - NORMA - VYROBNE OZNACENIE	KS
------	------------------	--	----

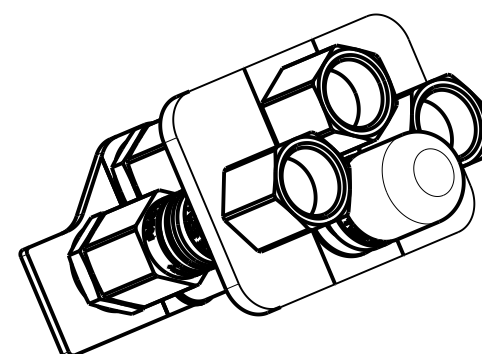
METHOD OF PROJECTION		SCALE	1:2	SYMBOL	REVISION	DATE	SIGNATURE
PROJECT	HYDRAULIC CONNECTION						

GENERAL TOL.							
MATERIAL 1	SEE DETAILS						
MATERIAL 2	MATERIAL 3						
MASS	1.43 kg						
DESIGNER	ING. KAROL RAFFAY						
PARENT ASSEMBLY							
FORMAT	A2	DATE	19-02-2016				

CEHY - DUMPER	
PARTNAME	
HYDRAULIC CONNECTION 2	
PARTNUMBER	
CHA00052	
SHEET NO.	NO. OF SHEETS
1	3



3D VIEW
SCALE 1:2



3D VIEW 2
SCALE 1:2